

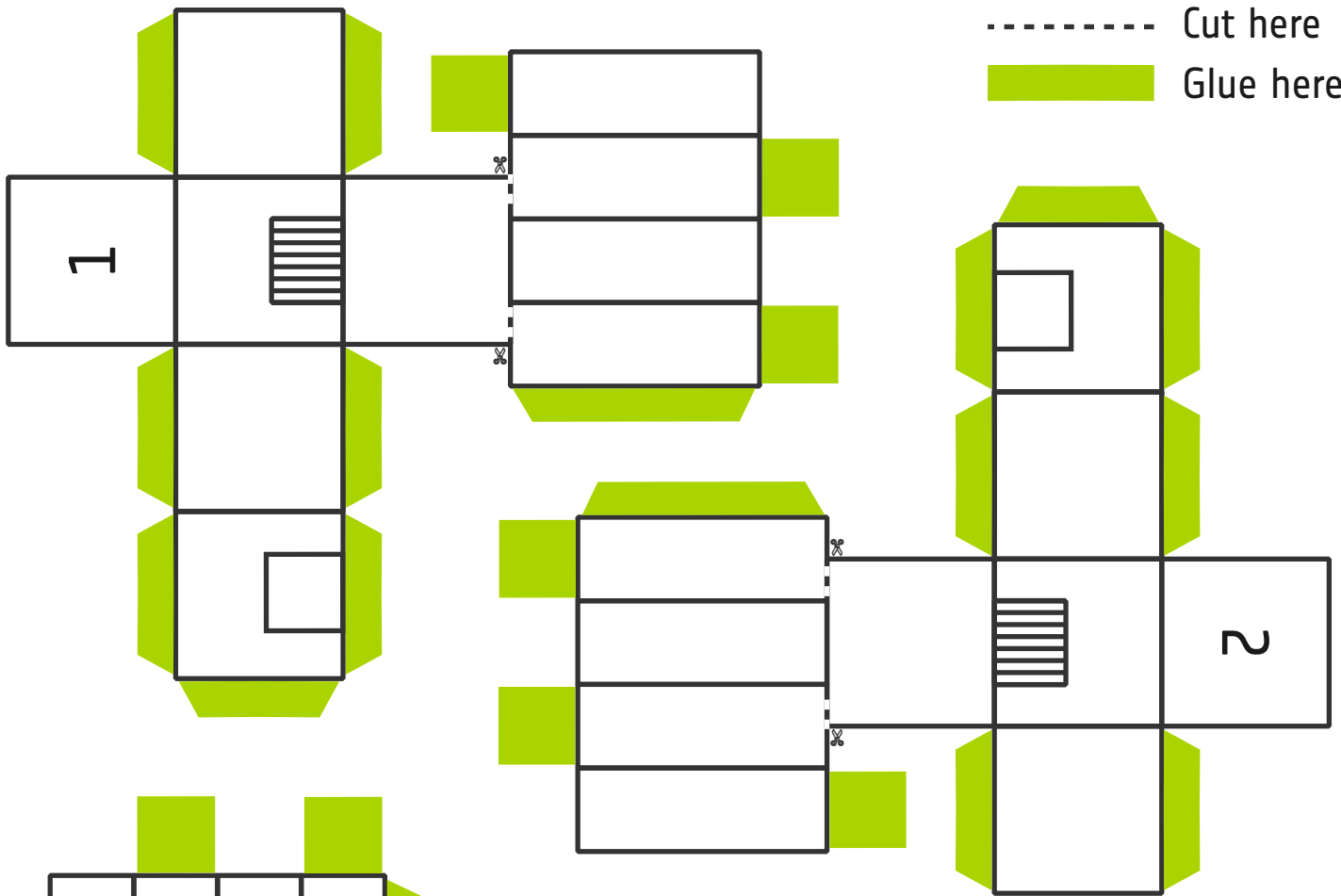
Main Building

Instructions: How to Build Your Own Moon Base

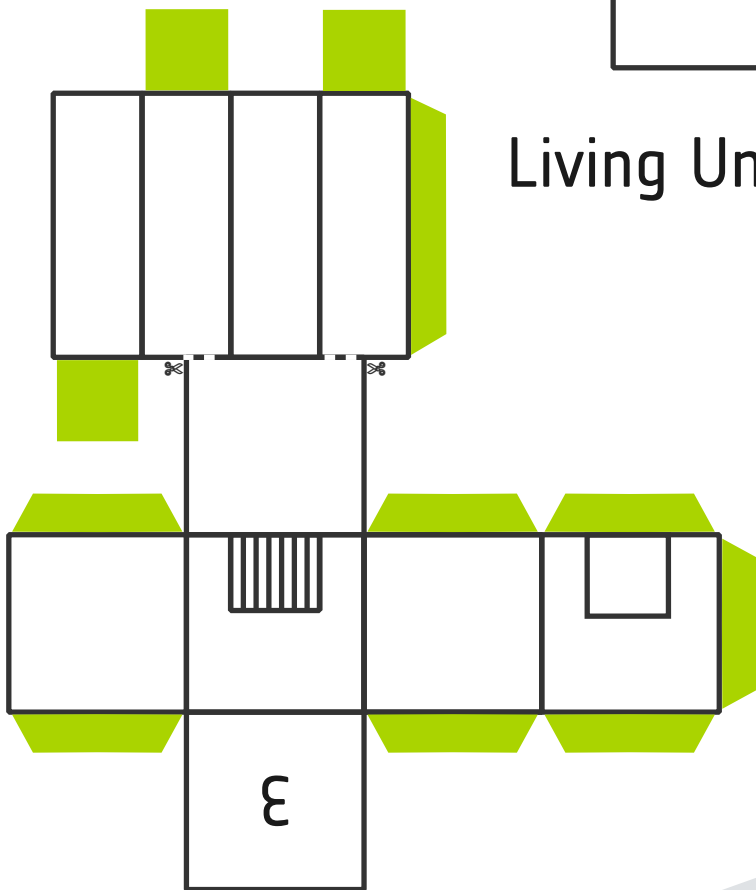
- **Cut out the parts:** Cut out the main building, the three living units, and the antenna. Remember to also cut along the dotted lines where necessary so you can fold and glue the parts.
- **Assemble the main building:** Start by folding and gluing the main structure.
- **Attach the living units:** Fold the units and attach them to the main building at points 1, 2, and 3. Cut on both sides of the numbers and glue them inside the main building.
- **Attach the antenna:** Roll and assemble the antenna and place it on the roof of the main building.

Congratulations, you have now built your very own moon base!

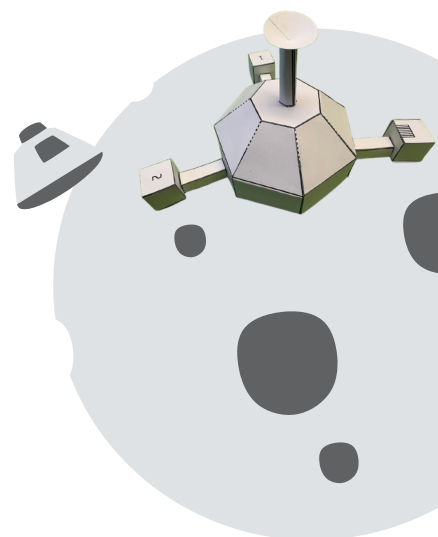
----- Cut here
Glue here



Living Units



Antenna



Cut and glue a moon base